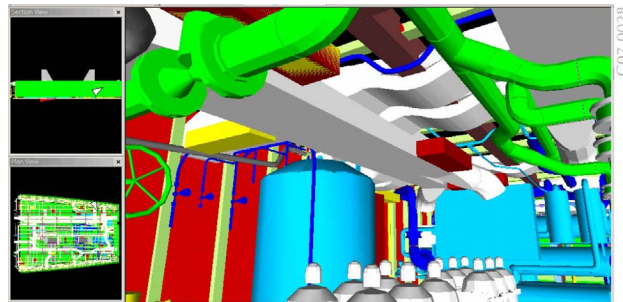


AMSEC, with its legacy M. Rosenblatt & Son acquisition, has nearly 60 years of premier ship design experience supporting public and private shipyards and vessel owners. Our managers, ship designers, and engineers support ship basic and detail design, construction and overhaul and modernization, including:

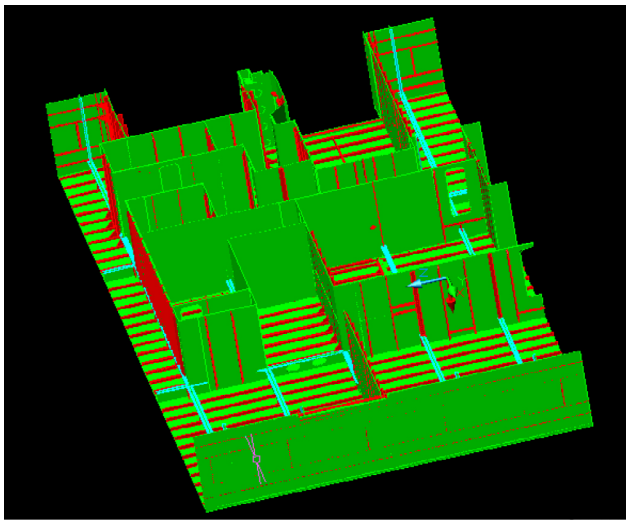
- ship construction estimates, specification reviews, and producibility assessments;
- maturation of concept, contract, and functional design data into a fully developed detail design;
- construction drawings, lofting and part nesting, and construction trades liaison;
- ship checks and as-is data collection;
- installation/alteration/overhaul design; and
- testing and trials support.

Our designers and degreed, licensed professional engineers provide effective solutions to U.S. Navy, U.S. Coast Guard, Military Sealift Command, NOAA, other government agencies, shipyards, integrators, vendors, and commercial customers.

- Shipchecks and As-Is assessments
- Corrosion and coatings engineering
- Environmental engineering
- Reliability and maintenance engineering
- System operational simulation and analysis
- 3-D product modeling
- Specifications and standards development
- Cost estimating



3-D Machinery Space Layout and Interference Check



Computer Aided Design

AMSEC Provides Full-Service Ship Design and Construction Support Engineering

- Project management
- System shipboard integration
- Design and construction engineering
- Testing and trials planning, execution, and assessment

AMSEC's Ship Design and Construction Support Core Competencies

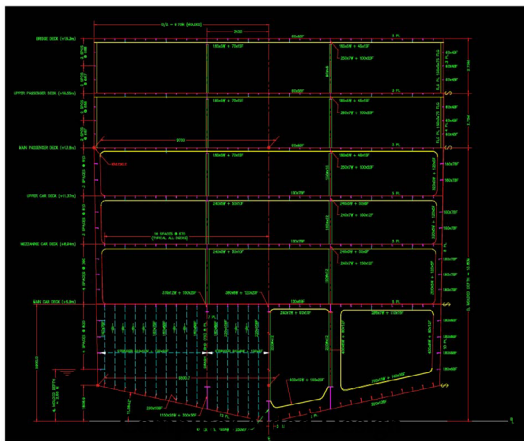
AMSEC has the experience to complete detailed design and engineering analysis for all shipboard systems, including:

- scantling plans, sections, and profiles;
- general arrangements;
- vibration and hi-shock analysis;
- main and secondary propulsion;
- electrical (power and communications) systems;
- electronics (C4ISR) systems;
- life support and auxiliary systems;
- hull and deck systems;
- weight, foundation and hole-cut management;
- outfitting;
- integrated bridge and machinery control systems;
- regulatory body interface, requirements, and approvals;
- shipyard construction trades liaison;
- tests and sea trials;
- Human Systems Integration (HSI);
- maintenance planning;
- alteration work package preparation; and
- technology assessment and insertion and obsolescence management.

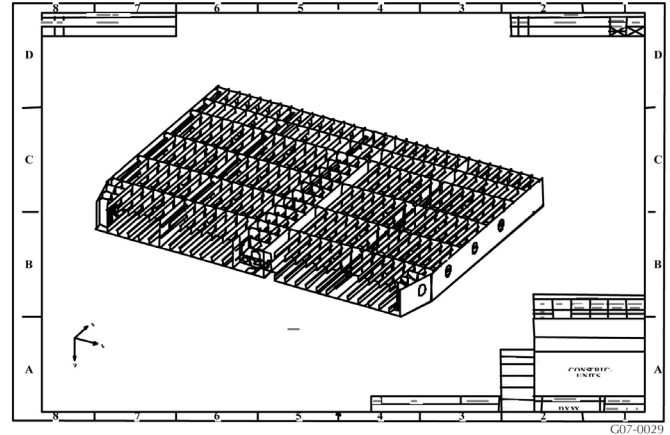
AMSEC's Key Ship Design and Construction Support Discriminators

To contribute to our clients' success, AMSEC offers the following in addition to our core technical capabilities:

- strong technical and engineering work force;
- recognized Navy subject matter experts in critical technologies;
- large in-house workforce knowledgeable in naval architecture, marine engineering, installation and logistics;
- facilities located in most major naval ports interconnected by secure high-speed networks;
- own or lease latest design and analysis and 3-D modeling and simulation computer software and hardware;
- DCAA approved purchasing system that facilitates acquisition of required materials and specialized services;
- ISO 9001:2008 certified Quality Management System employed company-wide ensures standardization of service quality and delivery; and
- corporate ownership and management totally committed to supporting our customers and their vessels.



G07-0030



Production Details and Assembly Drawings

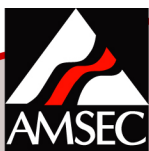
AMSEC's Current Ship Design and Engineering Customers

AMSEC has a long and diversified list of satisfied clients. These current valued customers include:

- Naval Sea Systems Command and PEOs;
- Norfolk, VA; Puget Sound, WA; and Pearl Harbor, HI naval shipyards;
- Naval Surface Warfare Center Carderock Division — Carderock, MD; Combatant Craft Little Creek, VA; and Philadelphia, PA;
- Military Sealift Command;
- U.S. Coast Guard — Engineering Logistics Center and Maintenance and Logistics Command;
- Federal, state, and local governments, agencies, and port authorities;
- Northrop Grumman Newport News and Northrop Grumman Ship Systems;
- VT Halter Marine;
- Marinette Marine Corporation; and
- Maritime equipment manufacturers.

Points of Contact: Doug Hess
202.264.7147
douglas.hess@hii-amsec.com

Ryan Norris
757.631.2239
ryan.norris@hii-amsec.com



AMSEC

A Subsidiary of Huntington Ingalls Industries

2829 Guardian Lane, Virginia Beach, VA 23452

www.amsec.com